

The Matsubushi Town Earthquake and Flood Hazard Map (2021 version) has been revised from the Matsubushi Town Earthquake and Flood Hazard Map published in March 2009, mainly for the following points.

[Main revisions]

●Earthquake

Based on the Great East Japan Earthquake, Saitama Prefecture has reflected the "Saitama Prefecture Earthquake Damage Estimation Survey" announced in 2012 and 2013 as a new damage estimation in preparation for an earthquake directly below the capital.

●Flood

Due to the revision of the Flood Prevention Act, we have reflected the inundation area map designated by the maximum possible rainfall.

• Tone River (Tonegawa Joryu River Office/Tonegawa Karyu River Office, Kanto Regional Development Bureau, Ministry of Land, Infrastructure, Transport and Tourism: July 2017)

• Edogawa River, Nakagawa River (Edogawa River Office, Kanto Regional Development Bureau, Ministry of Land, Infrastructure, Transport and Tourism: July 2017)

• Arakawa River (Arakawa Joryu River Office/Arakawa Karyu River Office, Kanto Regional Development Bureau, Ministry of Land, Infrastructure, Transport and Tourism: May 2016)

• Nakagawa River, Moto-Arakawa River, Ootoshifurutone River, Niigata River (Saitama Prefecture: May 2020)

• Arakawa River (Arakawa Joryu River Office/Arakawa Karyu River Office, Kanto Regional Development Bureau, Ministry of Land, Infrastructure, Transport and Tourism: May 2016)

• Nakagawa River, Moto-Arakawa River, Ootoshifurutone River, Niigata River (Saitama Prefecture: May 2020)

• Arakawa River (Arakawa Joryu River Office/Arakawa Karyu River Office, Kanto Regional Development Bureau, Ministry of Land, Infrastructure, Transport and Tourism: May 2016)

• Nakagawa River, Moto-Arakawa River, Ootoshifurutone River, Niigata River (Saitama Prefecture: May 2020)

• Arakawa River (Arakawa Joryu River Office/Arakawa Karyu River Office, Kanto Regional Development Bureau, Ministry of Land, Infrastructure, Transport and Tourism: May 2016)

• Nakagawa River, Moto-Arakawa River, Ootoshifurutone River, Niigata River (Saitama Prefecture: May 2020)

• Arakawa River (Arakawa Joryu River Office/Arakawa Karyu River Office, Kanto Regional Development Bureau, Ministry of Land, Infrastructure, Transport and Tourism: May 2016)

• Nakagawa River, Moto-Arakawa River, Ootoshifurutone River, Niigata River (Saitama Prefecture: May 2020)

• Arakawa River (Arakawa Joryu River Office/Arakawa Karyu River Office, Kanto Regional Development Bureau, Ministry of Land, Infrastructure, Transport and Tourism: May 2016)

• Nakagawa River, Moto-Arakawa River, Ootoshifurutone River, Niigata River (Saitama Prefecture: May 2020)

• Arakawa River (Arakawa Joryu River Office/Arakawa Karyu River Office, Kanto Regional Development Bureau, Ministry of Land, Infrastructure, Transport and Tourism: May 2016)

• Nakagawa River, Moto-Arakawa River, Ootoshifurutone River, Niigata River (Saitama Prefecture: May 2020)

• Arakawa River (Arakawa Joryu River Office/Arakawa Karyu River Office, Kanto Regional Development Bureau, Ministry of Land, Infrastructure, Transport and Tourism: May 2016)

• Nakagawa River, Moto-Arakawa River, Ootoshifurutone River, Niigata River (Saitama Prefecture: May 2020)

• Arakawa River (Arakawa Joryu River Office/Arakawa Karyu River Office, Kanto Regional Development Bureau, Ministry of Land, Infrastructure, Transport and Tourism: May 2016)

• Nakagawa River, Moto-Arakawa River, Ootoshifurutone River, Niigata River (Saitama Prefecture: May 2020)

• Arakawa River (Arakawa Joryu River Office/Arakawa Karyu River Office, Kanto Regional Development Bureau, Ministry of Land, Infrastructure, Transport and Tourism: May 2016)

• Nakagawa River, Moto-Arakawa River, Ootoshifurutone River, Niigata River (Saitama Prefecture: May 2020)

• Arakawa River (Arakawa Joryu River Office/Arakawa Karyu River Office, Kanto Regional Development Bureau, Ministry of Land, Infrastructure, Transport and Tourism: May 2016)

• Nakagawa River, Moto-Arakawa River, Ootoshifurutone River, Niigata River (Saitama Prefecture: May 2020)

• Arakawa River (Arakawa Joryu River Office/Arakawa Karyu River Office, Kanto Regional Development Bureau, Ministry of Land, Infrastructure, Transport and Tourism: May 2016)

• Nakagawa River, Moto-Arakawa River, Ootoshifurutone River, Niigata River (Saitama Prefecture: May 2020)

• Arakawa River (Arakawa Joryu River Office/Arakawa Karyu River Office, Kanto Regional Development Bureau, Ministry of Land, Infrastructure, Transport and Tourism: May 2016)

• Nakagawa River, Moto-Arakawa River, Ootoshifurutone River, Niigata River (Saitama Prefecture: May 2020)

• Arakawa River (Arakawa Joryu River Office/Arakawa Karyu River Office, Kanto Regional Development Bureau, Ministry of Land, Infrastructure, Transport and Tourism: May 2016)

• Nakagawa River, Moto-Arakawa River, Ootoshifurutone River, Niigata River (Saitama Prefecture: May 2020)

• Arakawa River (Arakawa Joryu River Office/Arakawa Karyu River Office, Kanto Regional Development Bureau, Ministry of Land, Infrastructure, Transport and Tourism: May 2016)

• Nakagawa River, Moto-Arakawa River, Ootoshifurutone River, Niigata River (Saitama Prefecture: May 2020)

• Arakawa River (Arakawa Joryu River Office/Arakawa Karyu River Office, Kanto Regional Development Bureau, Ministry of Land, Infrastructure, Transport and Tourism: May 2016)

• Nakagawa River, Moto-Arakawa River, Ootoshifurutone River, Niigata River (Saitama Prefecture: May 2020)

• Arakawa River (Arakawa Joryu River Office/Arakawa Karyu River Office, Kanto Regional Development Bureau, Ministry of Land, Infrastructure, Transport and Tourism: May 2016)

• Nakagawa River, Moto-Arakawa River, Ootoshifurutone River, Niigata River (Saitama Prefecture: May 2020)

• Arakawa River (Arakawa Joryu River Office/Arakawa Karyu River Office, Kanto Regional Development Bureau, Ministry of Land, Infrastructure, Transport and Tourism: May 2016)

• Nakagawa River, Moto-Arakawa River, Ootoshifurutone River, Niigata River (Saitama Prefecture: May 2020)

• Arakawa River (Arakawa Joryu River Office/Arakawa Karyu River Office, Kanto Regional Development Bureau, Ministry of Land, Infrastructure, Transport and Tourism: May 2016)

• Nakagawa River, Moto-Arakawa River, Ootoshifurutone River, Niigata River (Saitama Prefecture: May 2020)

• Arakawa River (Arakawa Joryu River Office/Arakawa Karyu River Office, Kanto Regional Development Bureau, Ministry of Land, Infrastructure, Transport and Tourism: May 2016)

• Nakagawa River, Moto-Arakawa River, Ootoshifurutone River, Niigata River (Saitama Prefecture: May 2020)

• Arakawa River (Arakawa Joryu River Office/Arakawa Karyu River Office, Kanto Regional Development Bureau, Ministry of Land, Infrastructure, Transport and Tourism: May 2016)

• Nakagawa River, Moto-Arakawa River, Ootoshifurutone River, Niigata River (Saitama Prefecture: May 2020)

• Arakawa River (Arakawa Joryu River Office/Arakawa Karyu River Office, Kanto Regional Development Bureau, Ministry of Land, Infrastructure, Transport and Tourism: May 2016)

• Nakagawa River, Moto-Arakawa River, Ootoshifurutone River, Niigata River (Saitama Prefecture: May 2020)

• Arakawa River (Arakawa Joryu River Office/Arakawa Karyu River Office, Kanto Regional Development Bureau, Ministry of Land, Infrastructure, Transport and Tourism: May 2016)

• Nakagawa River, Moto-Arakawa River, Ootoshifurutone River, Niigata River (Saitama Prefecture: May 2020)

• Arakawa River (Arakawa Joryu River Office/Arakawa Karyu River Office, Kanto Regional Development Bureau, Ministry of Land, Infrastructure, Transport and Tourism: May 2016)

• Nakagawa River, Moto-Arakawa River, Ootoshifurutone River, Niigata River (Saitama Prefecture: May 2020)

• Arakawa River (Arakawa Joryu River Office/Arakawa Karyu River Office, Kanto Regional Development Bureau, Ministry of Land, Infrastructure, Transport and Tourism: May 2016)

• Nakagawa River, Moto-Arakawa River, Ootoshifurutone River, Niigata River (Saitama Prefecture: May 2020)

• Arakawa River (Arakawa Joryu River Office/Arakawa Karyu River Office, Kanto Regional Development Bureau, Ministry of Land, Infrastructure, Transport and Tourism: May 2016)

• Nakagawa River, Moto-Arakawa River, Ootoshifurutone River, Niigata River (Saitama Prefecture: May 2020)

• Arakawa River (Arakawa Joryu River Office/Arakawa Karyu River Office, Kanto Regional Development Bureau, Ministry of Land, Infrastructure, Transport and Tourism: May 2016)

• Nakagawa River, Moto-Arakawa River, Ootoshifurutone River, Niigata River (Saitama Prefecture: May 2020)

• Arakawa River (Arakawa Joryu River Office/Arakawa Karyu River Office, Kanto Regional Development Bureau, Ministry of Land, Infrastructure, Transport and Tourism: May 2016)

• Nakagawa River, Moto-Arakawa River, Ootoshifurutone River, Niigata River (Saitama Prefecture: May 2020)

Publication date **July 2021**
 Issue **Matsubushi Town General Affairs Division**
2424 Matsubushi, Matsubushi Town
Telephone 048-991-2711 (representative) FAX 048-991-7681
048-991-1895 (direct)

地図調製・印刷 (株) 中央ジオマチックス 測量法に基づく国土地理院長承認(使用) R 3JHs 143

Contents

Roles of Self-help, Mutual Help, and Public Help	1
Evacuation Site in Matsubushi Town	2
Earthquakes	
About the Earthquake in Matsubushi Town	4
Protect Yourself from Earthquakes	6
Prepare for an Earthquake	8
Earthquake Hazard Map	
Likelihood to Shake	10
Building Collapse Risk	12
Liquefaction Potential	14
Seismic Intensity and Shaking	15
Floods	
About the Flood in Matsubushi Town	16
Disaster Prevention Information and Evacuation Behavior During Floods	18
Prepare for Floods	20

Flood Hazard Map	
Inundation Area of Around Matsubushi Town (target river synthetic version)	22
Tone River (Northern)	24
Tone River (Southern)	26
Edo River (Northern)	28
Edo River (Southern)	30
Nakagawa River	32
Arakawa River	33
Ootoshifurutone River	34
Moto-Arakawa River and Niigata River	35
Inundation Assumption Simulation	36
Inundation Duration	37
Comprehensive	
Stockpile of Supplies	38
How to Get Information and Contact Us	40
Evacuation Life	42
Inquiries/Contact	44
Evacuate Safely with My Timeline (my evacuation action plan)	45

Roles of self-help, mutual help, and public help

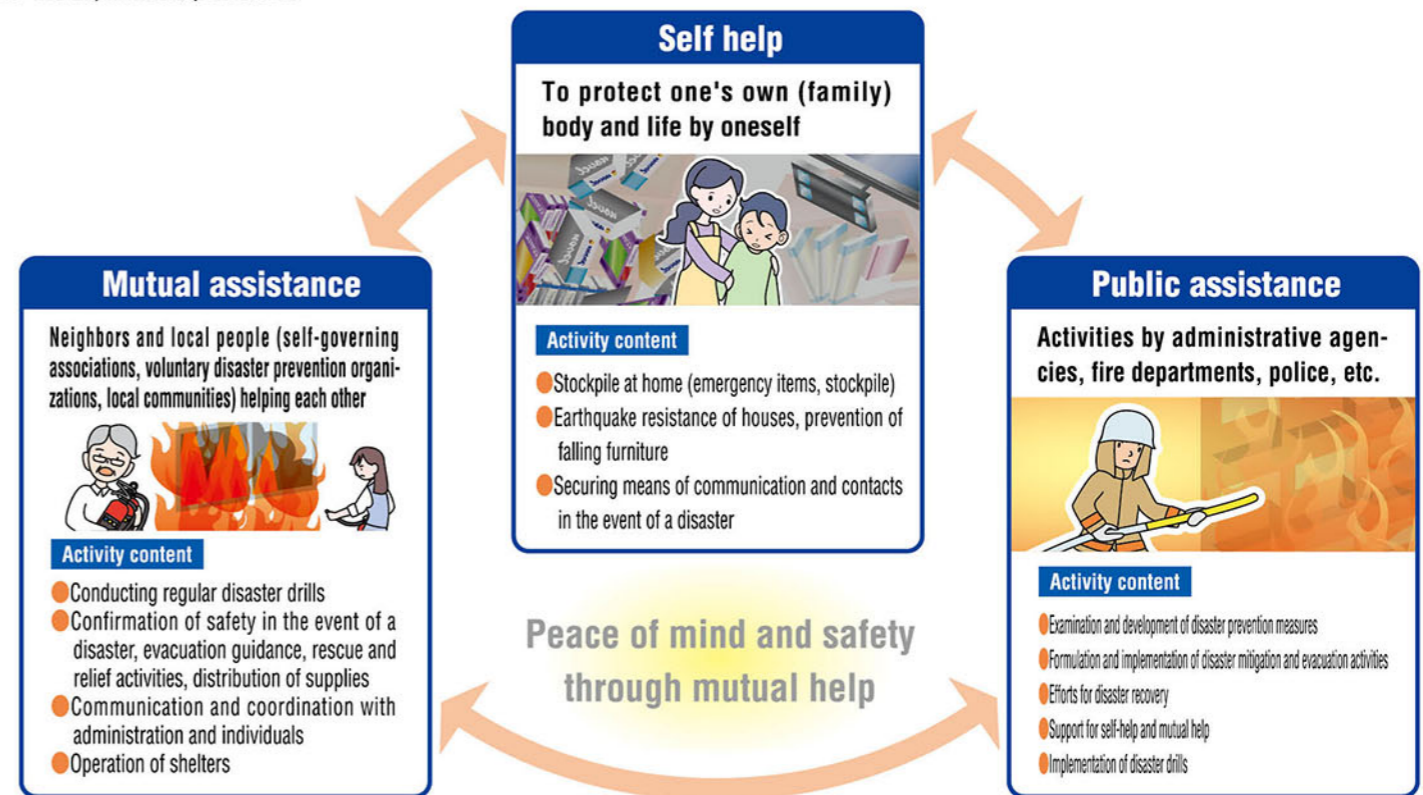
Administrative agencies, including Matsubushi Town, are implementing various disaster prevention measures in preparation for the occurrence of disasters. However, it is essential to prepare for disasters, and in the event of a disaster, the cooperation of the townspeople and the local community is essential.

Disaster Prevention and Mitigation through Mutual Cooperation

In the immediate aftermath of a large-scale disaster, it is considered difficult for public agencies to quickly rush to all sites for rescue.

From the lessons of past disasters, if disaster strikes, first protect your own life (self-help), then help each other with the local people to reduce the damage (mutual help), survive on your own for three days, and then go to administrative agencies and administrative agencies. It is said that it is desirable to wait for support (public assistance) from the fire department, police, etc.

- For self-help... Let's talk about it as a family
Regularly confirm how to contact each other in the event of a disaster, evacuation sites, stockpiles, etc. In addition, let's actually walk and confirm the evacuation route.
- For Mutual Aid...Let's cherish our relationship with neighbors
In major disasters, mutual help in the community can be the difference between life and death. Always value your relationship with your neighbors.



Do you not make voluntary disaster prevention organization?

Voluntary disaster prevention organizations are organizations that engage in disaster prevention and mitigation activities on a daily basis among residents' associations and residents, and are the cornerstone of "mutual assistance."

In the event of a large-scale disaster such as an earthquake, storm, flood, or fire, there is a risk that the town, fire department, or disaster prevention agency alone may not be able to handle the response. In order to prevent or reduce the spread of damage in such a situation, the most effective initial disaster prevention activities by local residents are carried out with the feeling of "three neighbors across the street."

Matsubushi Town lends disaster prevention materials and equipment to voluntary disaster prevention organizations and provides operating subsidies. Please consult with the general affairs and disaster prevention section of the general affairs section regarding the establishment and support of organizations.

Inquiries
 General affairs section general affairs disaster prevention charge
 Telephone 048-991-1893/1895 FAX 048-991-7681

Please support those who need consideration

Those who need support in the event of a disaster, such as the elderly and people with disabilities, are called "persons requiring special care." Let's cooperate with each other when evacuating and during evacuation life. In addition, there are people who need consideration that cannot be judged by appearance, such as internal disorders. If you see someone with a help card, etc., please understand and show them consideration.

